



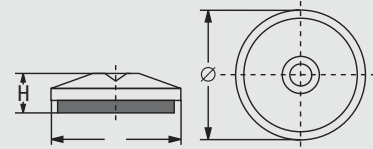
for vibration and structure borne noise isolation

## BNV (square)

type	BNV 50/4	load daN/pc.	150	type	BNV 50/0	load daN/pc.	200	type	BNV 50/30 W	load daN/pc.	65	L mm	60	W mm	60	H mm	22	H type 0 mm	22	H type 30 W mm	25
	BNV 80/4	450			BNV 80/0	550			BNV 80/30 W	160			85		85		24		24		27
	BNV 110/4	1000			BNV 110/0	1200			BNV 110/30 W	400		123		123		27		27		30	30
	BNV 115/4	1000			BNV 115/0	1200			BNV 115/30 W	400		163		88		29		29		32	32
	BNV 150/4	1800			BNV 150/0	2250			BNV 150/30 W	700		147		147		32		32		35	35
	BNV 200/4	3000			BNV 200/0	4000			BNV 200/30 W	1400		265		165		35		35		38	38

## BNR (round)

Screws and nuts can be supplied upon request (page 15).



type	BNR 50/4	load daN/pc.	150	type	BNR 50/0	load daN/pc.	150	type	BNR 50/30 W	load daN/pc.	55	Ø mm	60	H mm	21	H type 4 mm	21	H type 0 mm	21	H type 30 W mm	24
	BNR 80/4	400			BNR 80/0	500			BNR 80/30 W	140			85		21		21		21		24
	BNR 110/4	800			BNR 110/0	1000			BNR 110/30 W	300		121		26		26		26		29	29
	BNR 150/4	1500			BNR 150/0	1800			BNR 150/30 W	450		162		30		30		30		33	33
	BNR 200/4	2500			BNR 200/0	3500			BNR 200/30 W	1000		213		30		30		30		33	33

## Leveling elements series, types BNVS and BNRS with leveling screws (flexibly connected)

### Range of application:

Types **BNVS + BNRS** are used in cases where a firm connection of the element to the machine is desirable! Angle differences are equalized by means of the movable leveling screw.

### Examples:

**BNVS 110/4** = 4 means: equipped with type B 4!

**Application:** milling machines, drilling machines!

**BNVS 110/0** = 0 means: equipped with type B 0!

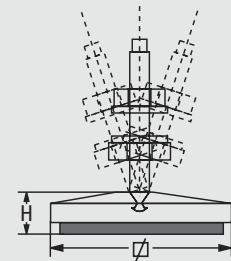
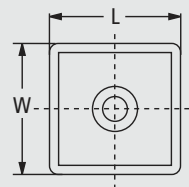
**Application:** lathes, machining centers etc.!

**BNVS 110/30-W** = 30 W means: equipped with type B 30 W!

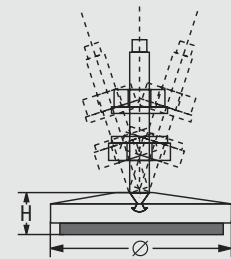
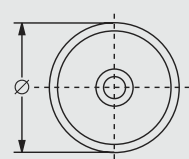
**Application:** suited for all machines requiring no vibration isolation, anti-slip only.

**Important:** When ordering please specify the desired size of leveling screw. We stock sizes from M 10 to M 24, in lengths from 70 to 300 mm (page 15).

### BNVS (square)



### BNRS (round)



## BNVS (square)

type	BNVS 50/4	load daN/pc.	150	type	BNVS 50/0	load daN/pc.	200	type	BNVS 50/30 W	load daN/pc.	65	W mm	60	H mm	22	H type 4 mm	22	H type 0 mm	22	H type 30 W mm	25
	BNVS 80/4	450			BNVS 80/0	550			BNVS 80/30 W	160			85		24		24		24		27
	BNVS 110/4	1000			BNVS 110/0	1200			BNVS 110/30 W	400		123		27		27		27		30	30
	BNVS 150/4	1800			BNVS 150/0	2250			BNVS 150/30 W	700		147		32		32		32		35	35

## BNRS (round)

type	BNRS 50/4	load daN/pc.	100	type	BNRS 50/0	load daN/pc.	150	type	BNRS 50/30 W	load daN/pc.	55	Ø mm	60	H mm	21	H type 4 mm	21	H type 0 mm	21	H type 30 W mm	24
	BNRS 70/4	400			BNRS 70/0	450			BNRS 70/30 W	140			78		28		28		28		31
	BNRS 110/4	800			BNRS 110/0	1000			BNRS 110/30 W	300		121		28		28		28		31	31
	BNRS 150/4	1500			BNRS 150/0	1800			BNRS 150/30 W	450		162		30		30		30		33	33

for vibration and structure borne noise isolation

## Leveling Elements, Type Series **BNRV** and **BNRSV** in stainless steel

### Field of application:

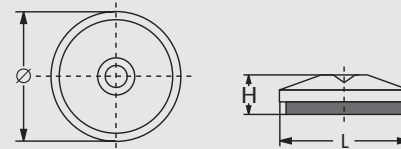
For machines in the food, beverage and tobacco industries.

For machines in the packaging, chemistry and pharmaceutical industries.

Screws and nuts can be supplied on request.



### Type series **BNRV** without leveling screw



type	BNRV 50/4	BNRV 70/4	BNRV 110/4	BNRV 150/4	load daN/pc.	150	400	800	1500
type	BNRV 50/30-W	BNRV 70/30-W	BNRV 110/30-W	BNRV 150/30-W	load daN/pc.	50	150	400	800
type	BNRV 50/BR 7	BNRV 70/BR 7	BNRV 110/BR 7	BNRV 150/BR 7	load daN/pc.	200	600	1200	2500
					Ø mm	54	76	116	156
					H type 4 mm	25	28	29	31
					H type 30-W mm	28	31	32	34
					H type BR 7 mm	17	20	21	23

### Type **BNRSV** with leveling screw

(flexibly connected)

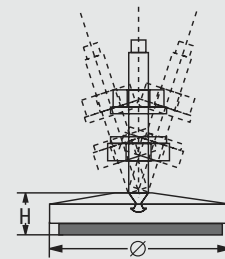
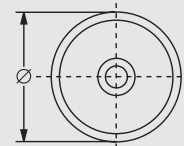
in stainless steel

#### Examples:

**BNRV 110/4 e.g. BNRSV 110/4** = 4 meaning: equipped with medium hard isolating pad. Provides good vibration and structure borne noise isolation.

**BNRV 110/30-W e.g. BNRSV 110/30-W** = 30-W meaning: equipped with soft isolating pad. Provides high quality vibration and structure borne noise isolation.

### BNRSV



**BNRV 110/BR 7 e.g. BNRSV 110/BR 7** = BR 7 stands for: equipped with anti-slip pad. No vibration isolation!

type	BNRSV 50/4	BNRSV 70/4	BNRSV 110/4	BNRSV 150/4	load daN/pc.	100	400	800	1500	
type	BNRSV 50/30-W	BNRSV 70/30-W	BNRSV 110/30-W	BNRSV 150/30-W	load daN/pc.	50	150	400	800	
type	BNRSV 50/BR 7	BNRSV 70/BR 7	BNRSV 110/BR 7	BNRSV 150/BR 7	load daN/pc.	200	600	1200	2500	
					leveling screw incl. 2 nuts + 2 washers (VA)	mm	M 10 x 70/100/200	M 12 x 100/150/200	M 16 x 100/150/200	M 20 x 100/150/200

### Type **BFE** with leveling screw

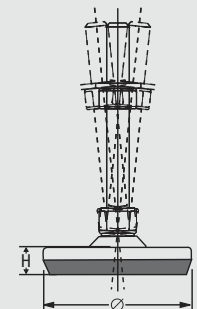
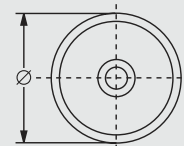
(flexibly connected)

in stainless steel

#### Field of application:

Low cost stainless steel elements for the food, pharmaceutical, packaging and chemical industries.

### BFE



type	BFE 50	BFE 80	BFE 100	BFE 120	Ø mm	50	80	100	125			
					H 1 mm	14	17	19	19			
					load daN/pc.	300	850	2000	3000			
					leveling screw incl. 2 nuts + 2 washers (VA)	mm	M 8/ 10 x 50/80/100/120/150/180/200	M 12 x 50/80/100/120/150/180/200	M 16 x 50/80/100/120/150/180/200/250/300	M 20 x 50/80/100/120/150/180/200/250/300	M 24 x 50/80/100/120/150/180/200/250/300	M 30 x 50/80/100/120/150/180/200/250/300

(All screws are suitable for all element sizes)